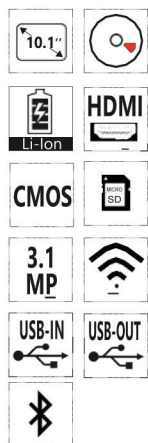
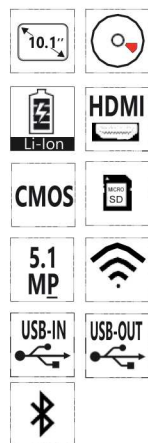


4 TB Series



TB-3W

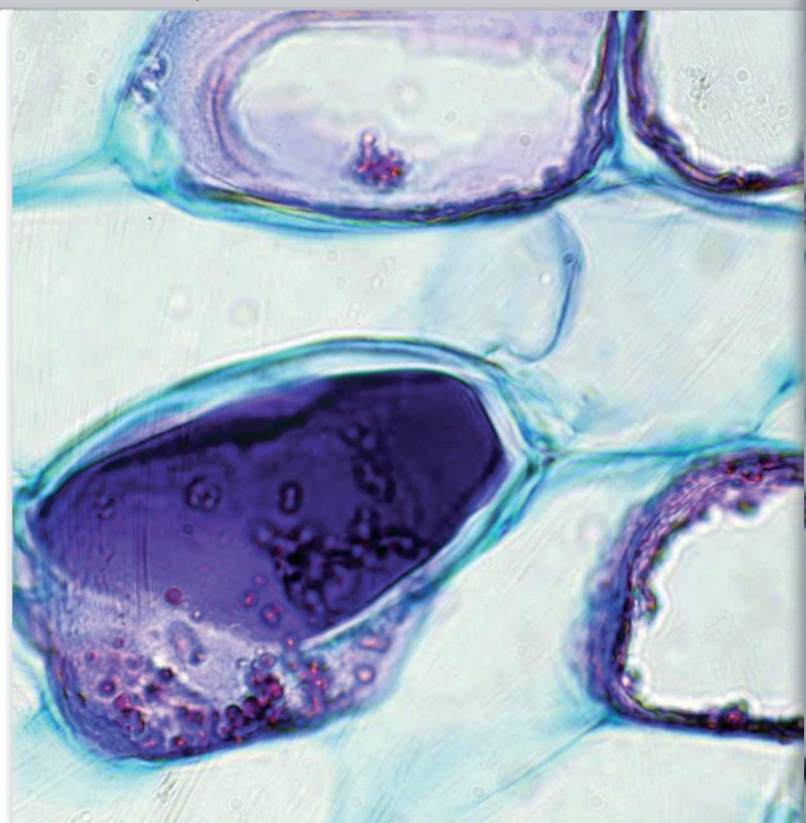


TB-5W

Exclusive, powerful Windows tablet PC combined to a CMOS sensor cameras with USB 2.0 connection, recommended for discussion groups and educational purposes thanks to the easy operation, space-saving features and unparalleled comfort. The unique holding solution for open discussion is 360° rotating and tilting for any adjustment, whilst the large touch screen provides fast, responsive and smooth control.

At any time, the tablet PC can be easily detached to be used as a laptop.

Non-stop operation is granted by the simultaneous camera and power connection for long-term use and class/lesson alternation. Connectable also to all the trinocular tube of different brands using the projection lens included or additional focusable C-Mount adapter. Downloadable, free of charge software is always available to enable the latest updates.



TB Series

- » External digital camera connected to Windows tablet PC
- » Large touch screen with fast, responsive and smooth control
- » Easily detachable, can be used as a laptop
- » A 2-in-1 solution that you can use like a PC, being Windows-based
- » Simultaneous camera and power connection for long-term operation
- » Powerful Intel processor ensuring top performance and speed
- » High-resolution, vivid color graphic display
- » Crisp 3.1 or 5.1 MP images
- » High frame rate
- » Reliable color fidelity
- » C-mount connection (direct or via dedicated adapter, on any microscope)
- » C-mount projection lens and calibration slide included
- » Downloadable, free of charge software
- » OPTIKA ProView for Windows



TB Series

Tablet Models:

TB-3W: Windows tablet PC with B3 camera, 3.1MP CMOS, USB2.0, EU

TB-5W: Windows tablet PC with B5 camera, 5.1MP CMOS, USB2.0, EU



OPTIONAL

TB Series - Specifications

CAMERA TECHNICAL SPECIFICATIONS	TB-3W	TB-5W
Digital camera resolution	3.1 MP (2048 x 1536)	5.1 MP (2592 x 1944)
Signal output	USB 2.0	USB 2.0
Sensor Size	1/2"	1/2.5"
Sensor technology	CMOS	CMOS
Sensor type	Aptina CMOS	Aptina CMOS
Image format	4/3	4/3
Pixel size	3.2 x 3.2 μ m	2.2 x 2.2 μ m
Frame rate full resolution	12 fps (2048 x 1536)	7 fps (2592 x 1944)
Frame rate other resolutions	32 fps (1024 x 768); 45 fps (680 x 510)	27 fps (1280 x 960); 90fps (640 x 480)
Sensitivity	1 V/lux-second	0.53 V/lux-second
Signal / noise ratio	43 dB	40.5 dB
Dynamic range	61 dB	66.5 dB
ADC conversion	8 Bit	8 Bit
Color Depth	1 Bit ; 4 Bit; 8 Bit; 24 Bit	1 Bit; 4 Bit; 8 Bit; 24 Bit
Exposure Time	0.244 msec - 2 sec	0.294 msec - 2 sec
Binning	1x1; 2x2; 3x3	1x1; 2x2; 4x4
IR filter	380–650 nm (IR-cut 1lter)	380–650 nm (IR-cut 1lter)
Camera power	PC USB	PC USB
C-mount	YES	YES

TB Contents:

- USB camera
- Windows tablet PC
- USB 2.0 cable
- C-mount projection lens
- Micrometric slide
- Touch pen
- External power supply



TB Series - Tablet specifications

TABLET TECHNICAL SPECIFICATIONS

Operating system	Windows 10 (64Bit)
CPU	Intel® Atom™ Z8350, Quad core
CPU speed	1.44 GHz
Graphiccard	Intel® HD Graphics 400
RAM	Ram 4 GB LPDDR3
Display size	LED 10.1" IPS Multi Touch Screen
Display resolution	1920x1200
Storage	Hdd 64 GB
Network	Wireless - Bluetooth 4.0
Input ports	Micro USB (OTG) - USB Type-C - Micro SD card reader
Output ports	Microphone - Headphone - MicroHDMI
Battery Type	Lithium-ion
Battery capacity	6500 mAh
Power consumption	15W
Power supply	5V 3A
Dimensions (mm)	261 X 167 X 9mm
Weight (Kg)	0.53 kg
Language	Multilanguage

